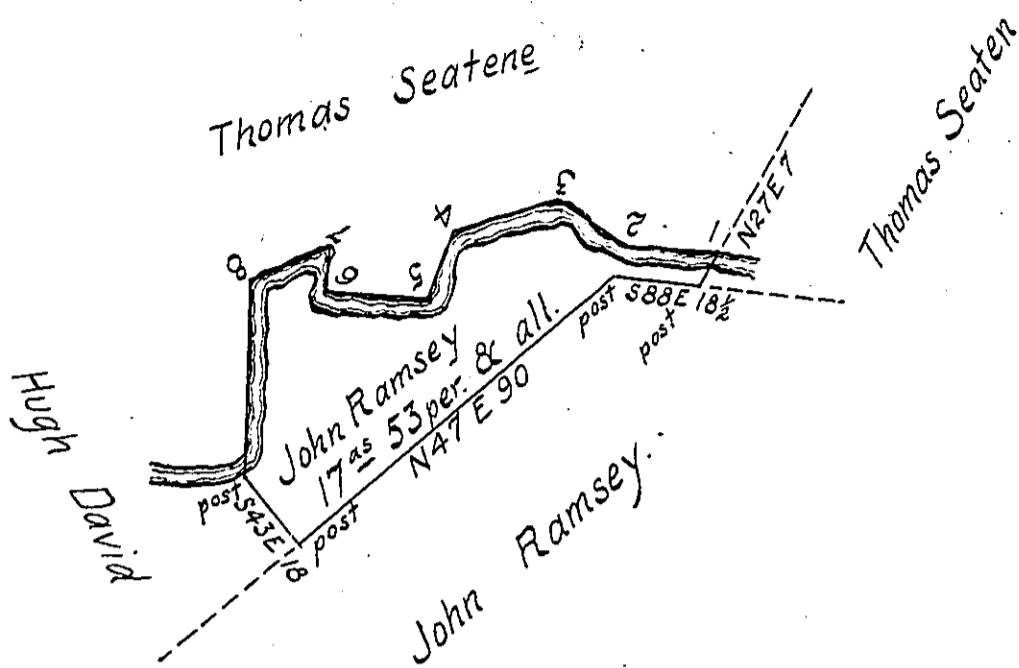


Bearings and Distances
down the Creek.

Nº 1.	West	19.
2.	N60W	18.
3.	S70W	24.
4.	S20W	15.
5.	West	22.
6.	North	10.
7.	S64W	18.
8.	South	42.
Total Dist.		168



Surveyed in pursuance of a warrant granted to John Ramsey dated June 24th 1817 situated in Fairfield Township Westmoreland County on the Waters of Mill Creek Containing Seventeen Acres and fifty three perches and allowance of Six per Cent for roads &c.

July 16th 1818 }

Tho^s Potter D.S.

Jacob Spangler Esq^r S.G. }
of Pennsylvania }

IN TESTIMONY that the above is a copy of the original remaining on file in the Department of Internal Affairs of Pennsylvania, made conformably to an Act of Assembly approved the 16th day of February, 1833, I have hereunto set my Hand and caused the Seal of said Department to be affixed at Harrisburg, this seventh day of August 1906.

Loach P. Brown
Secretary of Internal Affairs.